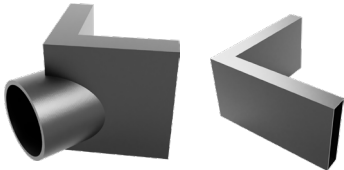


The Hydraway Fittings are used in conjunction with the Hydraway product.

The fittings are made of polypropylene plastic that prevents disintegration. The fabric end cap is made of a geotextile filter fabric that prevents backfill material from entering Hydraway.

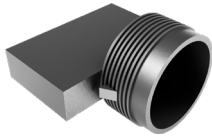
PRODUCT **CATALOG #** **BOX QTY.** **DESCRIPTION**

CORNER - Used to connect two strips of Hydraway at a junction.



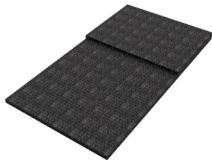
COROUT-06	10	6" to 4" corrugated pipe
COROUT-12	10	12" to 4" corrugated pipe
COR-06	10	6"

END OUTLET - Used to make transition from Hydraway to a corrugated or smooth 4" plastic pipe.



EO-06	10	6" to corrugated pipe
EO-12	10	12" to corrugated pipe
EO-12SCH40	10	12" to PVC pipe

FABRIC - Used to cover the end cut of Hydraway in a horizontal termination.



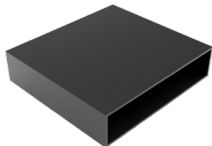
EC-06	25	6"
EC-12	25	12"

SIDE OUTLET - Used to make in line transition from Hydraway to 4" corrugated pipe.



SO-06-C	10	6"
SO-12-C	10	12"

SPLICE - Used to connect two strips of Hydraway either vertically or horizontally.



SP-06	10	6"
SP-12	10	12"

STEP DOWN - Used to connect two strips of Hydraway on a vertical stepped foundation.



SD-06	10	6"
SD-12	10	12"

T CONNECTOR - Used to connect 3 stripes of Hydraway. Generally used in a vertical application.



TEE-06	10	6"
--------	----	----