



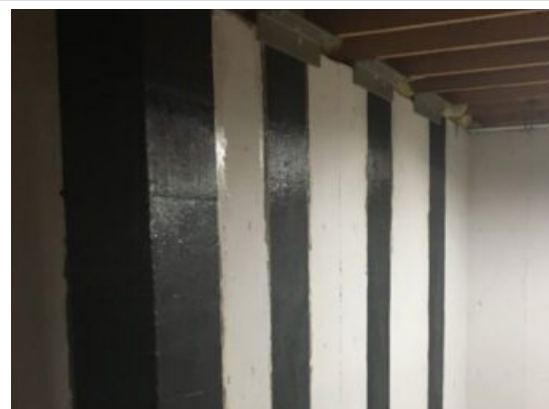
# INTECH<sup>®</sup>

ANCHORING  
SYSTEMS

## CARBON FIBER WALL BRACING SYSTEM

**The Ultimate Solution for Foundation Wall Stability - Built for Contractors, Trusted by Engineers**

The Carbon Fiber Composite Straps are designed to permanently secure and stabilize bowing basement walls, preventing further inward movement caused by external soil pressure. Utilizing industrial-strength epoxy, the system penetrates deep into concrete pores, creating a durable bond that resists future pressure.



## KEY FEATURES & BENEFITS

- **Permanently Stops Inward Wall Movement:** A long-lasting solution that prevents further structural damage.
- **200 ksi Tensile Strength:** The system boasts impressive strength for maximum stability and protection.
- **Low-Profile Design:** At less than 1/8-inch thick, it's a sleek, unobtrusive solution.
- **Non-Corrosive Durability:** Built to withstand the test of time, this system won't degrade over the years.
- **Paintable for Low Aesthetic Impact:** Blend it seamlessly with any room, ensuring the reinforcement doesn't affect your project's aesthetics.
- **Non-Invasive Installation:** No excavation required, meaning minimal disruption to your client's property.
- **Engineer-Approved Design:** Provides the reassurance of a proven, tested system that meets building standards.

## HOW IT WORKS

Carbonbond's advanced composite strengthening system increases the tensile strength on the inside face of bowing walls, counteracting external soil pressure. When the walls are properly constructed and securely tied into the sill plate and home's framing, the carbon fiber reinforcement alone is sufficient to stop inward movement. The system provides a clean, permanent solution, ensuring your project meets safety and durability standards with minimal disruption.

## WHY CONTRACTORS CHOOSE THIS SYSTEM

- **Streamlined Installation:** No need for excavation, heavy equipment, or lengthy processes. Install the system quickly and efficiently, keeping labor and costs down.
- **Versatility:** Ideal for walls showing early signs of inward movement, the system adapts to a variety of home structures and conditions.
- **Lasting Client Satisfaction:** Offer your clients a permanent, aesthetically pleasing solution without the eyesore or maintenance of bulky braces or ongoing repairs.

## CARBON FIBER WALL BRACE KIT CONTENTS, CB-WBK-8

- Unidirectional Carbon Fiber (8 sheets, 12-inch-wide by 90-inch-long; designed to cover 8 straps)
- 747 Epoxy Resin Part A Base (128 oz, 3:1 Mix)
- 747 Epoxy Resin Part B Hardner (43 oz, 1:3 Mix)
- Paint Stirrers (2)
- Roller Frame (1)
- Roller Covers (4)
- Gloves (4 pair)
- Poly Drop Cloths (2 - 4-feet by 10-feet)
- Measuring Bucket (1)



## FILLER COMPOUND KIT, CFFC-64

Filler compound is used to fill uneven surfaces (voids) and mortar joints.

- 777 Epoxy Filler Part A Base (64 oz, 1:1 Mix)
- 777 Epoxy Filler Part B Hardener (64 oz, 1:1 Mix)
- Cardboard Squares (4)
- Plastic Putty Knife (1)
- Gloves (2 pair)



## COMPOSITE ANGLE BRACKET, CBCA-4-4-12

Carbon fiber composite angle brackets secure to the top of the carbon fiber straps, adding extra reinforcement to prevent wall movement and ensure a durable installation.

