

INTECH[®]

**ANCHORING
SYSTEMS**

RESIDENTIAL FOUNDATION REPAIR BROCHURE

BUILDING STRONG FOUNDATIONS

Intech Anchoring Systems is the go-to material partner for contractors looking to repair and strengthen homes. With our comprehensive range of solutions, we can tackle a wide range of foundation issues, including settling foundations, uneven floors, cracks, and other signs of structural distress. Our products are engineered, tested, and proven to meet industry standards, ensuring reliable and durable solutions for your underpinning needs.

INTECH OFFERS:

- EXTENSIVE PRODUCT RANGE
- ON TIME DELIVERY
- ENGINEERING EXPERTISE & EXPERIENCE
- CUSTOMIZATION CAPABILITIES
- INNOVATIVE SOLUTIONS
- FIELD CERTIFICATIONS
- LOAD TESTING
- INSTALLATION EQUIPMENT

UNDERPINNING SOLUTIONS

Intech Anchoring Systems offers a complete line of solutions for underpinning projects, featuring helical and resistance piers. Our range of underpinning products offers versatile and reliable options for stabilizing and strengthening existing structures. In an underpinning foundation, piles are installed independent of the structure to depths beyond problematic soils. The required load capacity is achieved through and is a function of the installing torque. The piles are attached to the existing foundation with a pre-engineered bracket.

BENEFITS:

- Reach competent soil below active zone
- Installs in limited access and low overhead areas
- No excavation or spoils to remove
- Loads may be immediately applied, no waiting on cure time
- Installs in any weather condition



HELICAL PIERS

Helical piers provide a cost-effective and efficient solution for underpinning, offering excellent load-bearing capacity and stability. These piers are designed to penetrate deep into the soil, providing structural support and addressing settlement issues. Helical Piers are best used in areas where the bedrock is deeper than normal.

Unlike traditional methods such as excavation, pile driving, or pile drilling, helical piers offer a non-disruptive solution for foundation repair. These piers can be easily screwed into the subsurface without causing disturbance to the existing structure or surrounding soil. With no need for grout and the ability to load them immediately, helical pier foundation repair is efficient and time-saving. The use of small equipment makes it possible to underpin structures in areas with limited access, including those with reduced overhead space and restricted entry points.



RESISTANCE PIERS

Resistance Piers, also known as push piers, are an ideal choice for underpinning projects that require lifting and stabilizing settled foundations. With their robust design and high load-bearing capacity, resistance piers effectively transfer the weight of the structure to stable soil or bedrock, ensuring long-lasting stability. Resistance Piers are recommended where bedrock is known to be shallow and the weight of the structure allows sufficient soil penetration. The pier acts as a load transfer from the home to the end bearing.

When resistance piers are installed, they serve as a protection against settlement, providing stability to foundations and effectively restoring settled structures close to their original positions. This process often results in the closure of structural defects such as cracks and deformities caused by the settlement. The permanent nature of resistance piers ensures the long-term stability of the structures while also offering an economically attractive solution. As a result, the value of the structures is either retained or regained, making resistance piers a reliable and cost-effective choice for foundation repair.



STRUCTURAL STABILIZATION SYSTEMS

Intech Anchoring Systems Force Arrester brand includes two unique products for stabilizing and supporting the foundation and floors of a home.

WALL BRACE

The Force Arrester Wall Brace System is a structural beam support that counters inward forces on foundation walls that cause cracking, bowing, shearing, and shifting. The Wall Brace System stabilizes both load-bearing and non-load-bearing foundation walls.

BENEFITS:

- No heavy equipment needed for installation
- Powder-coated to resist rust and corrosion
- No disturbance to lawn and landscaping
- Can be tightened to straighten wall over time
- Durable and versatile
- 2-joint system that distributes the load, so joists don't split under excessive pressure

SUPPORT COLUMN

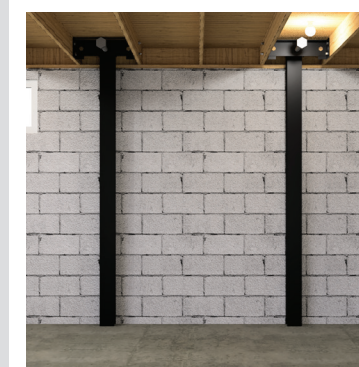
The Force Arrester Support Column System is a support system for settling and sagging beams in crawlspace, which affect the floor joists and floors above. The Support Column System lifts sinking floors back into place and protects against future movement.

BENEFITS:

- Engineer designed and tested
- Supports load capacities over 60,000 pounds
- Powder-coated for rust and corrosion resistance
- Custom fit to any crawlspace height
- Can be installed in limited-access areas

WALL ANCHORS

Intech Anchoring Systems offers helical and deadman wall anchor systems. Deadman anchors provide reliable solutions for contractors seeking to stabilize and reinforce bowing or leaning walls in residential properties. Our helical wall anchoring systems are specifically engineered to deliver exceptional lateral support, effectively preventing further movement or deterioration of the walls. By utilizing high-quality steel helicals that are installed through the wall and anchored into stable soil, our deadman anchors ensure reliable and long-lasting wall stabilization. The anchor plates, securely fastened to the interior surface of the wall, apply the necessary pressure to stabilize the structure, and in some cases, the anchored wall may be able to be straightened. This cost-effective and efficient solution effectively redistributes the structural load, addressing wall stability issues and ultimately creating a safe and secure living environment for homeowners.



Perpendicular

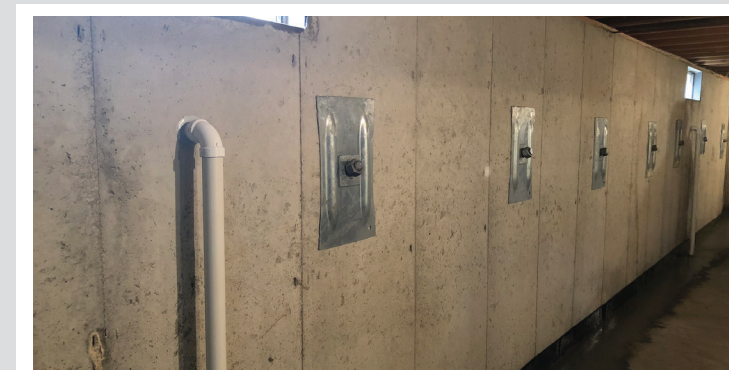


Parallel



BENEFITS:

- Versatility; can be used in various wall types including concrete or block
- Permanent solution
- Shorter completion time
- Limited living disturbance
- Cost-effective



CARBONBOND

Carbonbond is an innovative and advanced carbon fiber reinforcement system used for structural repair applications. This cutting-edge technology utilizes high-strength carbon fiber sheets with a specialized epoxy resin to improve the strength, durability, and load-bearing capacity of various structures. Carbonbond is particularly effective in reinforcing and repairing concrete elements such as beams, columns, walls, and slabs, as well as masonry walls. With its lightweight composition, non-corrosive properties, and easy installation process, Carbonbond provides contractors with an efficient solution for strengthening and rehabilitating existing structures. The system offers exceptional tensile strength,

KEY FEATURES:

- Excellent rigidity and strength
- Formulated with premium resins
- Low exotherm
- Mixes easily, pumpable, or pourable
- Excellent stability

CRACK INJECTION

Intech Anchoring Systems offers a solution for contractors seeking to repair homes by providing epoxy injection services for cracks in foundations or basement walls. This reliable and effective process addresses two critical needs: sealing the cracks to prevent moisture intrusion and providing additional support to the damaged concrete.

By injecting epoxy into the cracks, a strong and durable bond is created, effectively sealing the damaged areas, and preventing further moisture penetration. This not only helps in repairing the cracks but also protects the foundation from potential water damage and the associated risks such as mold growth and structural deterioration.

Furthermore, epoxy injection reinforces the affected areas, providing added strength and stability to the concrete. This helps to prevent further shifting or settling of the foundation, ensuring the long-term structural integrity of the home.

KEY FEATURES:

- Moisture insensitive to cure on damp or wet surfaces
- Easy mix ratio
- No shrinkage
- Excellent adhesion to concrete, wood, and metals
- Deep penetrating and tenacious bonding of cracks in structural concrete



We're here to help!

Take advantage of our professional engineers and expert team who offer valuable insights, recommendations, and technical expertise at every stage. Contact us today!

INTECH[®]
ANCHORING
SYSTEMS



**FORCE
ARRESTER**[™]

